

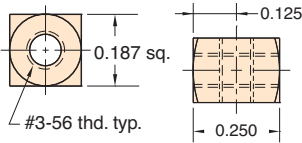


MINIMATIC® L T X FITTINGS


All fittings are Brass unless otherwise noted

#3-56 Couplings

(5/pack)

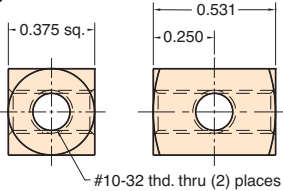


Porting	Order No.
In-Line	11749-1
"T"	11749-2
"X"	11749-3

Thread: M2.5 - 0.45 (#3-56 US equiv.) **Options:** (-ENP) 
Use: Threads into Clippard subminiature cylinder; fits 1/16" I.D. hose

#10-32 "X" Coupling

(5/pack)

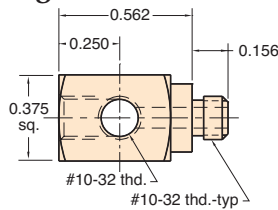


Order No.
15002-5

Options: (-ENP) 

#10-32 to #10-32 Fittings

(5/pack)

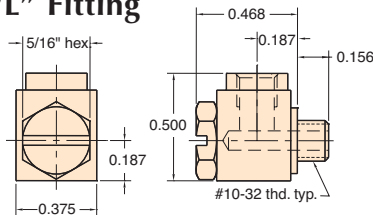


Porting	Order No.	Hex.
"L"	15002-2	7/16"
"T"	15002-3	7/16"
"X"	15002-4	7/16"


Options: (-ENP) 

Adjustable #10-32 "L" Fitting

(5/pack)

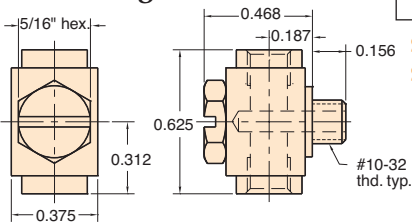


Order No.
15002-1


Stud: Stainless steel hex head with screwdriver slot (12292) 
Seals: Buna-N o-ring furnished **Options:** (-ENP)

Adjustable #10-32 "T" Fitting

(5/pack)

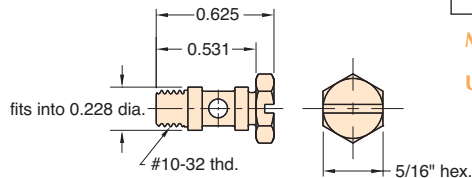


Order No.
15002-6

Stud: Stainless steel hex head with screwdriver slot (12292) 
Seals: Buna-N o-ring furnished **Options:** (-ENP)

Miniature #10-32 Manifold Stud

(5/pack)



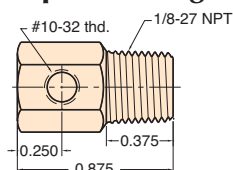
Order No.
12292

Material: Stainless steel **Seals:** Buna-N o-ring and gasket furnished

Use: This hollow, cross-drilled stud is useful for connecting specially-made manifolds to multiple ports of valves or cylinders, eliminating need for external fittings with hose

1/8" NPT to #10-32 Adapter Fittings

(5/pack)



Porting	Order No.	Hex.
"L"	15090-1	7/16"
"T"	15090-2	7/16"
"X"	15090-3	7/16"

Options: (-ENP) 